

01 CARS FOR SALE

BUICK LeSabre, 1974. Runs good, \$550. Call 649-3094 after 5.

CENTER MOTORS

461 Main St., Manchester

Low Cost Financing

- 1988 Ford Bronco... 1983 Chevy Cavalier... 1984 Chevy Cavalier... 1985 Ford Bronco... 1986 Ford Bronco...

01 CARS FOR SALE

1977 CUTLASS Supreme. Engine factory rebuilt, 30,000 miles.

TRUCKS/VANS FOR SALE

1977 MONTE Carlo. Mini condition, excellent body.

02 TRUCKS/VANS FOR SALE

1976 GMC Jimmy S-15. Excellent condition, low mileage.

03 CAMPERS/TRAILERS

1981 SHASTA 15' Pop-up camper, sleeps 6, good condition.

04 AUTOS FOR RENT/LEASE

FREE Mileage on low cost auto rentals. Village Auto Rental.

USED CARS and TRUCKS Savings Surpassed only by SELECTION

Most Makes, Models, Colors

01 CARS FOR SALE

- 87 CHEV CAMARO... 84 BUICK LESABRE... 86 YUGO 'C'... 87 CHEV CELEBRITY... 85 BUICK REGAL... 88 CHEV NOVA... 86 CHEV CAVALIER JC... 84 FORD MUSTANG L... 85 BUICK SKYLARK... 87 NISSAN SX200... 84 HONDA ACCORD... 79 CHEV MALIBU... 87 PONT FIREBIRD... 88 CHEV BERETTA... 86 CHEV CAMARO... 83 CHEV CAVALIER... 87 NISSAN MAXIMA... 82 OLDS CUTLASS SUP... 86 OLDS CIERA... 87 CHEV CELEBRITY... 84 CHEV CAVALIER... 88 CHEV CORSICA... 82 PONT GRAN PRIX... 86 CAVALIER Z-24... 87 CHEV CELEBRITY... 88 CHEV CAPRICE... 87 CHEV NOVA... 88 CHEV CORSICAS... 87 CHEV. S-10 P/U... 81 PLY ARROW... 86 CHEV ASTRO 'CL'... 85 GMC CABELLERO... 86 CHEV S10 4x4... 88 CHEV C1500... 86 CHEV ASTRO VAN...

TRUCKS

WE TAKE PRIDE IN OUR USED CARS AND TRUCKS... STOP BY AND SEE WHY.

CARTER CHEVROLET CO., INC.

1229 Main Street, Manchester 646-6464



WE HAVE TOO MANY MAZDAS

WE HAVE OVER 120 NEW 1988 MAZDAS WE MUST SELL, COME IN, WE'LL BEAT ANYONE'S DEAL!

Grid of car models and prices: ECONOMICAL & SPUNKY 323 ONLY \$7720.00; DEPENDABLE VALUE 626 ONLY \$11,263.00; ROOMY & SPORTY MX-6 ONLY \$11,869.00; PURE EXCITEMENT RX-7 ONLY \$15,880.00; INEXPENSIVE LUXURY 929 ONLY \$17,683.00; PICK UP A SNOWBLOWER NEW 1988 MAZDA 4x4 or 4x2 TRUCK Offer Expires 9-30-88.

MORIARTY BROTHERS 301-315 CENTER STREET MANCHESTER, CONNECTICUT 643-5135

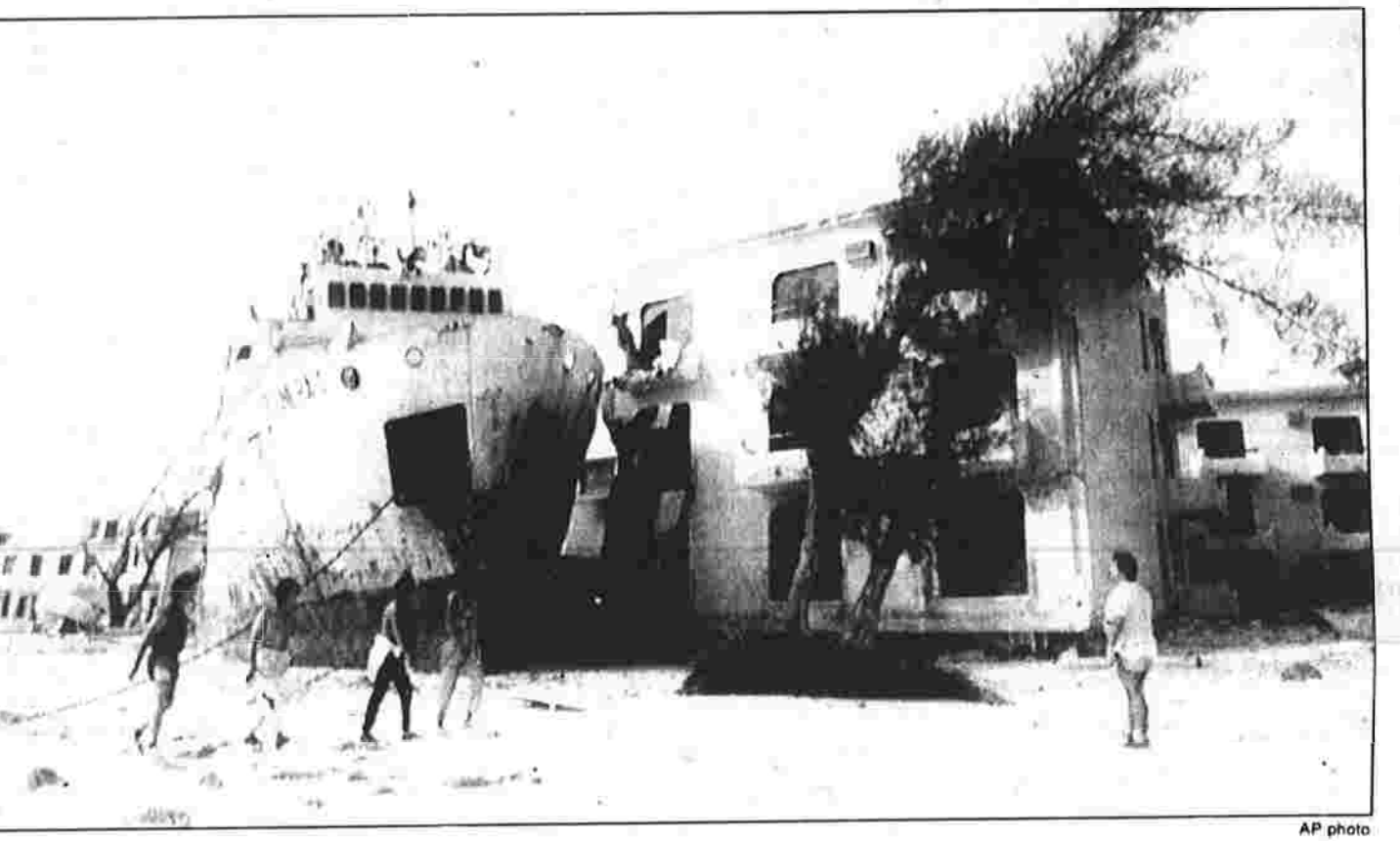
NO MATTER HOW YOU LOOK AT IT... MANCHESTER HONDA HAS THE BEST DEAL FOR YOU! 1988 HONDA YEAR-END CLOSEOUT NOW IN PROGRESS SAVE AS NEVER BEFORE ON A NEW HONDA NOW... MANCHESTER HONDA 24 ADAMS ST. 646-3515

8th District celebrates in a giant way Sunday

By Alex Girelli Manchester Herald Complete parade lineup, related stories, page 4 The visiting dignitaries who will march near the beginning of the parade include U.S. Sen. Lowell P. Weicker Jr., U.S. Rep. Barbara Kennelly, state Sen. Michael Meotti, state Rep. James McCavannah, and state Rep. John Thompson.

Manchester Herald

Friday, Sept. 16, 1988 Manchester, Conn. — A City of Village Charm 30 Cents



BEACHED SHIP — Residents survey a 300-foot ship that was blown ashore in Cancun, Mexico, on Thursday by Hurricane Gilbert.

Texas waits for Gilbert

Brownsville braces for killer hurricane By Joel Williams The Associated Press BROWNSVILLE, Texas — Hurricane Gilbert's leading edge lashed the coast and its 120 mph winds swirled toward landfall tonight, as officials in the Caribbean and Mexico tallied billions in damage from the giant storm.

Insurers prepare for the worst

HARTFORD (AP) — As weather watchers predicted that the raging Hurricane Gilbert could hit the United States, insurance companies alerted their "catastrophe teams," and began making necessary emergency preparations in case the storm causes major damage.

40 ducks found dead in Irving Street pond

About 40 ducks were found dead in a private pond on Irving Street this morning. Health and environmental officials plan to take water samples and do autopsies of the birds to determine the cause of the deaths.

Revaluation might cost \$846,000

By Andrew Yurkovsky Manchester Herald A new revaluation to take the place of the bungled 1987 revaluation will cost \$846,000 if the town hires the firm the administration is recommending for the job, Finance Director Boyce Spinelli said today.

Campaign Meotti and Zinsser debate issues /3

Not easy Manchester soccer triumphs, but does it the hard way /13

Wishbone Scientist discovers it has a use /9

SEP 16 1988

AS 88 ENDS

HUGE SAVINGS ON OUR TERRIFIC INVENTORY OF QUALITY IMPORTS

"Sure we'll match the others BUT - They will never match our service!!"

Savings begin

Scranton

CHRYSLER, PLYMOUTH, INC.

WE'VE GOT 91 88'S TO CHOOSE FROM



1988 CHRYSLER NEW YORKER
Twilight Blue, 4 door, AT, PS, P Seats, P. Windows, Much, Much More!
#1718 • Was \$21,777.00

NOW \$17,480⁵⁰ / \$320⁰⁰ / Mo.*

*30 months @ 11.75%, Amt. Fin. \$14,480.50 with \$2000 Downpayment, Tax & License extra.




1988 CHRYSLER LeBARON
Sedan, AC, Fuel Injected, Auto, Cruise Control, Tilt Wheel, More
#1620 • Was \$14,163.00

NOW \$12,308⁵⁰ / \$250⁰⁰ / Mo.*

Factory Rebate -300⁰⁰

*30 months @ 11.75% with \$1000 Down. Amt. Fin. \$11,308.50 Tax & License extra.



1988 PLYMOUTH CARAVELLE
Luxury Equipment, Loaded • #1841 • Was \$15,068.00

NOW \$13,084⁰⁰ / \$267²⁷ / Mo.*

Factory Rebate -650⁰⁰

*30 months @ 11.75% with \$1000 Down. Amt. Fin. \$12,004.00 Tax & License extra.

HOT LINE PREOWNED SPECIALS

USED CAR SPECIALS

1982 DODGE ARIES, 44K miles, very clean..... **\$3495**

1983 DODGE ARIES, Reliable, Clean, Good..... **\$3175**

1985 PLYMOUTH RELIANT, 20K Miles, Extra Nice..... **\$4390**

NO REASONABLE OFFERS REFUSED ON PRE-OWNED VEHICLES

ALL PRICES REFLECT ANY APPLICABLE REBATES ASSIGNED TO DEALER TO REDUCE SALES PRICE. PRICES DO NOT INCLUDE TAXES & REGISTRATION FEES. VEHICLES SUBJECT TO PRIOR SALES.



Scranton
CHRYSLER PLYMOUTH, INC.
55 WINDSOR AVENUE, VERNON
875-3311

Scranton

A Dealer You Can Deal With
MOTORS, INC.

1988 NEW CAR COUNTDOWN

153 TO GO!
PONTIACS • OLDSMOBILES • CADILLACS & GMC TRUCKS...

- PONTIACS**
- LeMans 4 dr. white #J8700
 - LeMans 'SE' 4 dr. blue #J8777
 - LeMans 4 dr. red # SOLD
 - LeMans Aerocoupe blue # SOLD
 - LeMans 'SE' 4 dr. black # SOLD
 - LeMans 'SE' 4 dr. blue #J8693
 - LeMans 4 dr. silver # SOLD
 - LeMans Aerocoupe red # SOLD
 - LeMans 'SE' Sedan black #J8795
 - Grand Am Coupe blue #J8732
 - Grand Am Coupe blue, Demo # SOLD
 - Grand Am 'LE' 4 dr. red, Demo #J8655
 - Grand Am 4 dr. gray # SOLD
 - Grand Am 2 dr. blue # SOLD
 - Grand Am 2 dr. maroon # SOLD
 - Grand Am 2 dr. gray # SOLD
 - Grand Am 'SE' 2 dr. black #J8796
 - Grand Am 'LE' 2 dr. gray #J8791
 - Grand Am 'SE' 4 dr. red, # SOLD
 - Grand Am 'SE' 2 dr. white #J8788
 - Grand Am 'SE' 4 dr. white, #J8785
 - Grand Am 'SE' 2 dr. red, # SOLD
 - Grand Am 'SE' 2 dr. black, # SOLD
 - Grand Prix cpe. red, # SOLD
 - Grand Prix 'SE' cpe. white, # SOLD
 - Grand Prix cpe. demo, silver, # SOLD
 - Grand Prix 'SE' cpe. silver, #J8754
 - Grand Prix cpe. blue #J8763
 - Grand Prix 'SE' cpe. red, #J8771
 - Grand Prix cpe. red, # SOLD
 - Grand Prix cpe. red, # SOLD
 - Grand Prix cpe. white, #J8767
 - Grand Prix cpe. white, # SOLD
 - Firebird Trans Am GTA gray, # SOLD
 - Firebird cpe. blue, # SOLD
 - Firebird cpe. white #J8747
 - Firebird Trans Am blue, # SOLD
 - Firebird Trans Am silver, #J8792
 - 6000 Sedan white, #J8781
 - 6000 4 dr. Sedan blue, # SOLD
 - 6000 4 dr. Sedan, maroon, demo # SOLD
 - 6000 4 dr. Sedan, red, # SOLD
 - 6000 4 dr. Sedan, red, #J8512
 - Bonneville 'SSE' Sedan, red, # SOLD
 - Bonneville 'LE' Sedan, white, # SOLD
 - Bonneville 'SSE' Sedan, gray, # SOLD
 - Safari Wagon, white, # SOLD
 - Safari Wagon, blue, # SOLD
- OLDSMOBILES**
- Cutlass Supreme Brhm, white # SOLD
 - Cutlass Supreme 2 dr. demo, gray # SOLD
 - Cutlass Supreme 2 dr. blue, #J6633
 - Cutlass Supreme 2 dr. blue, # SOLD
 - Cutlass Supreme SL, black #J6658
 - Cutlass Supreme cpe. blue, # SOLD
 - Cutlass Supreme SL, blue #J6676
 - Cutlass Supreme SL, blue, #J6651
 - Cutlass Supreme cpe. white, # SOLD
 - Cutlass Supreme SL, platinum, # SOLD
 - Cutlass Supreme cpe. wte, demo, #J6767
 - Cutlass Supreme SL, white, # SOLD
 - Cutlass Supreme cpe. gray, #J6776
 - Cutlass Supreme SL, black #J6772
 - Cutlass Supreme SL, red, #J6771
 - Cutlass Supreme I, gray, #J6773
 - Cutlass Supreme cpe. platinum, # SOLD
 - Cutlass Supreme SL, red, #J6779
 - Cutlass Supreme I, black, #J6788
 - Delta 88 2 dr. Brgm, gray, demo, # SOLD
 - Delta 88 4 dr. brown, # SOLD
 - Touring Sedan, white, #J6737
 - 98 Regency Brm 4dr, white, demo, #J6706
 - 988 Regency 4 dr, Antelope, demo, # SOLD
 - Tornado Cpe, blue, #J6597
- FIRENZAS**
- Firenza 2 dr. cpe. blue, #J6523
 - Firenza Cruiser wgn. lt. brn, #J6532
 - Firenza 4 dr, red, # SOLD
 - Firenza Wagon, red, #J6512
 - Calais 2 dr, red, # SOLD
 - Calais 2 dr, white, #J6535
 - Calais SL 2 dr, Beechwood, #J6765
 - Calais 4 dr, burgundy, #J6511
 - Calais 4 dr, red, #J6542
 - Calais 4 dr, white, #J6541
 - Ciera cpe, red, # SOLD
 - Ciera cpe, blue, #J6711
 - Ciera cpe, gray, #J6748
 - Ciera Sedan, white, demo, #J6668
 - Ciera Sedan, black, #J6677
 - Ciera Sedan, white, #J6694
 - Ciera Sedan, silver, demo, # SOLD
 - Ciera Sedan, black, #J6680
 - Ciera Brgm, 4 dr, red, # SOLD
 - Cutlass Cruiser, wgn, red, # SOLD
 - Cutlass Cruiser wgn, white, demo, #J6731

- CADILLACS**
- Allante red, #J7519
 - Allante red, #J7572
 - Eldorado blue, #J7580
 - Eldorado platinum, #J7570
 - Eldorado ivory, # SOLD
 - Eldorado white, #J7571
 - Eldorado tan, #J7584
 - Seville gray, #J7539
 - Seville blue, #J7560
 - Seville Antelope, #J7538
 - Sedan DeVille blue, # SOLD
 - Sedan DeVille blue, #J7576
 - Sedan DeVille red, # SOLD
 - Sedan DeVille blue, demo, #J7575
 - Sedan DeVille blue, #J7552
 - Sedan DeVille platinum, #J7577
 - Sedan DeVille blue, #J7566
 - Sedan DeVille blue, #J7562
 - Sedan DeVille Antelope, #J7559
 - Sedan DeVille blue, #J7579
 - Coupe DeVille blue, #J7530
 - Coupe DeVille white, # SOLD
 - Coupe DeVille blue, #J7569
- GMC TRUCKS 77 IN STOCK READY TO ROLL!!**

SAVE THOUSANDS NOW!!



New 1988 Olds Firenza Wagon

- *4 Cyl. Engine
- *Automatic Trans.
- *AM/FM Stereo Cassette
- *Elect. Rear Def.
- *P. Steering
- *P. Brakes
- *Air Conditioner
- *4 Way Seat Adjuster
- *FAR Mats
- *Plus Much More

Example # 1

MSRP \$12,459
DISCOUNT -1248
YOU PAY 11,211
CASH or TRADE.... -2000
BAL. to FIN..... **\$9211**

2 TO CHOOSE FROM!



New 1988 Firenza 4 Dr. Sedan

- *4 Cyl. Engine
- *Automatic Trans.
- *P. Steering
- *P. Brakes
- *AM/FM Stereo Cassette
- *Elect. Rear Def.
- *Air Conditioner
- *4 Way Seat Adjuster
- *FAR Mats
- *Plus Much More

Example # 2

MSRP \$11,759
DISCOUNT -1279
YOU PAY 10,480
CASH or TRADE.... -2000
BAL. to FIN..... **\$8480**



New 1988 Oldsmobile Cutlass Supreme

Front Wheel Drive

Example Buy

ST #J6754

MSRP \$15,221
DISCOUNT -2336
YOU PAY 12,685
CASH or TRADE.... -2000
BAL to FIN..... **\$10,685**

"21 Others at Similar Savings"

80 Month's at **\$237⁰⁰**
*Discount includes all rebates
*Sales Tax and Reg. not included in payments

Mr. Goodwrench



Keep that great GM feeling with genuine GM parts.

Scranton MOTORS, INC.

All Above Payments **DO NOT** Include Tax & Registration.
All Cars Subject To Prior Sale - Not Responsible For Typographical Errors.

Oldsmobile, Cadillac, Pontiac, GMC Trucks
Rt. 83, Vernon — 872-9145
Hours: Mon., Tues., Wed. & Thurs. 9 a.m. to 8 p.m.;
Fri. 9 a.m. to 6 p.m.; Sat. 9 a.m. to 5 p.m.